



Board Meeting

Tuesday
September 09, 2014
7:00 p.m.
SIC — Harrisburg

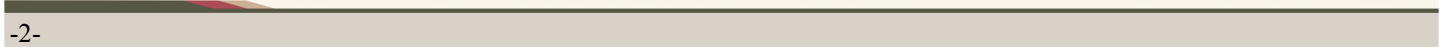
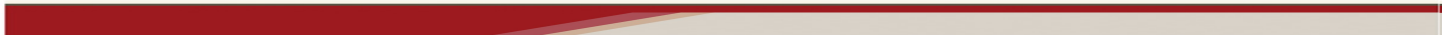
Please review and be prepared to vote on the following:
(You will find these in your email attachments)

- June Board Minutes
- June Financial Reports
- July Financial Reports
- August Financial Reports
- Personnel Committee Items

Service Provider Information will be provided at the meeting.

Inside this issue:

- Board Meeting Info.....1
- CEO Information3
- Board Member Info.....3
- IDES Report4
- Illinois workNet™5



CEO INFORMATION

PRIVATE MEMBERS NEEDED

The past few months we have had several members resign or have Defacto resignations due to absenteeism which has left us in need of (4) private members to assure the board remains certified by the State of Illinois and stays eligible to receive Workforce Investment Act funds to help the residents of Area #26.

**Board Certification is due to the state by October 01, 2014
We need to have four (4) more private members to be in compliance.**

**Please contact this office (382-5024)
if you have someone pending for your county.**

BOARD MEMBER INFORMATION



Public Nominations Mtg. 9/25/2014

A MEETING WILL BE HELD ON THURSDAY, SEPTEMBER 25, 2014 STARTING AT 1:00 PM AT THE ILLINOIS WORKNET CENTER LOCATED IN THE ARROWHEAD SHOPPING CENTER, 701 NORTH COMMERCIAL STREET, SUITE 6A, HARRISBURG, IL FOR THE PURPOSE OF RECEIVING NOMINATIONS FOR REPRESENTATIVES TO SERVE ON THE SOUTHERN 14 LOCAL WORKFORCE INVESTMENT BOARD.

AREAS FROM WHICH NOMINATIONS FOR APPOINTMENTS ARE BEING SOUGHT ARE:

CBO (COMMUNITY BASED ORGANIZATION), WIA TITLE I, WIA TITLE II, AND ECONOMIC DEVELOPMENT.

IDES REPORT

(July 2014)

Not Seasonally Adjusted Unemployment Rates (percent) for Local Counties and Areas

	July 14	July 13
Carbondale Area		
Alexander County	10.7%	12.2%
Jackson County	7.3%	9.0%
Massac County	8.5%	9.4%
Perry County	9.4%	12.7%
Pulaski County	10.2%	12.2%
Randolph County	7.1%	9.0%
Union County	9.6%	11.9%
Marion Area		
Franklin County	10.1%	13.2%
Johnson County	9.1%	11.8%
Williamson County	7.5%	9.4%
Harrisburg Area		
Gallatin County	8.0%	10.9%
Hamilton County	6.6%	8.7%
Hardin County	11.5%	13.5%
Pope County	10.1%	11.4%
Saline County	8.3%	11.2%
White County	6.6%	8.8%
Olney - Mt. Carmel Area		
Edwards County	7.5%	9.4%
Lawrence County	7.2%	8.8%
Richland County	8.0%	10.6%
Wabash County	6.5%	8.4%
Wayne County	7.4%	9.0%

Southern Illinois Highlights

Unemployment decreased in all 21 counties in Southern Illinois when compared to one year ago. The data is not seasonally adjusted.

Employment gains were reported in Construction, Retail Trade, and Recreation. Over the year payroll increases were reported in Transportation, Health Care Services and Business-Professional Services. Payroll advances also occurred in Financial Activities, Hospitality, and Mining in Southern Illinois.

Job opportunities were available in Sales, Transportation, and Health Care in the summer of 2014. Employment openings were reported in Food Services, Recreation, Office and Administrative Support, Management, and Production occupations. Jobs were also offered in Construction, Business and Finance, Computer Services, Social Services, and Installation, Maintenance, and Repair Occupations.

The unemployment rate identifies those who are out of work and seeking employment. A person who exhausts benefits, or is ineligible, still will be reflected in the unemployment rate if they actively seek work.

The IDES supports economic stability by administering unemployment benefits, collecting business contributions to fund those benefits, connecting employers with qualified job seekers, and providing economic information to assist career planning and economic development.

Historically, the Illinois unemployment rate is higher than the national rate. Only six times since January 2000 has the state rate been lower than the national rate. The data is seasonally adjusted and includes times of both economic expansion and contraction.

Note:

- Monthly 2013 unemployment rates and total non-farm jobs for Illinois metro areas were revised in February 2014, as required by the U.S. Dept. of Labor, Bureau of Labor Statistics (BLS). Comments and tables distributed for prior metro area news releases should be discarded as any records or historical analysis previously cited may no longer be valid.



Helping with recovery from a job layoff.

Bookmark the Illinois workNet layoff recovery site on your smartphone, iPad, tablet, notebook, any device with Internet access.

[Company Layoff Search](#) [Layoff Recovery Step Guide](#) [Reporting & Services](#) [Resume Builder](#) [FAQs](#) [News](#) [Events](#)

Layoff Recovery Step Guide

How It Works

Select Your Starting Point & Follow The Steps



Explore Opportunities & Jobs in a New Career Field



Find a Job or Advance in Your Current Career Field



Layoff Packet

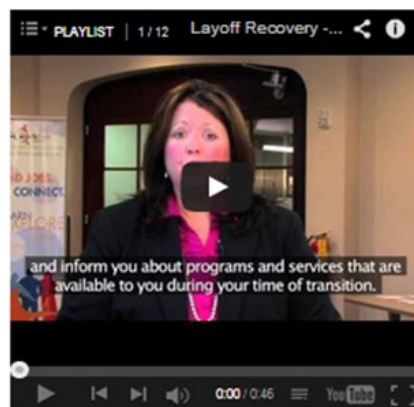
- Department of Insurance Brochure ([PDF](#))
- ICHIP and HIPAA-CHIP Brochure ([PDF](#))
- Illinois Healthcare Assistance Programs ([PDF](#))
- Illinois JobLink Brochure ([PDF](#))
- Laid Off Worker Flyer ([PDF](#))
- Unemployment Insurance Info ([PDF](#))
- Unemployment Insurance - Spanish ([PDF](#))
- Uninsured Ombudsman Program Brochure ([PDF](#))



Create a Great Resume

Log-in to:

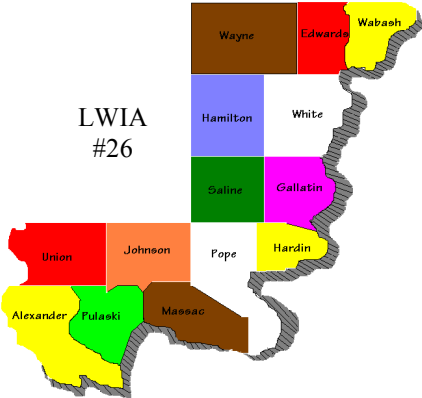
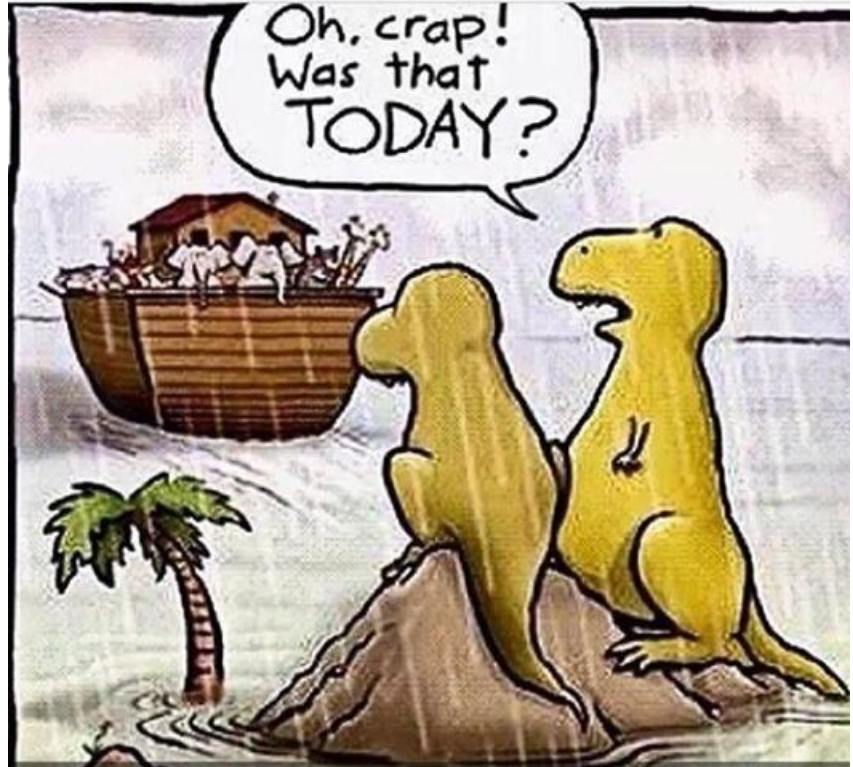
- Create or Manage Your Resumes.
- Create or Manage Your Cover Letters.
- Create or Manage Your Portfolios.
- Create or Manage Your Assessments.
- Create or Manage Your Interviews.
- Create or Manage Your Video Resumes.
- Create or Manage Your Resume Websites.



www.illinoisworknet.com

2014 Board Officers

Royce Carter, Chairman
Randall Rushing, Vice-Chair
Karen Weiss, Sec/Treasurer



Board Staff

Pam Barbee, Chief Financial Officer
pbarbee@so14lwib.com

Kim Jacobs, Monitor/EEO Officer
kjacobs@so14lwib.com

Victoria Taylor, Office Assistant
officeassistant@so14lwib.com

304 East Robinson Street, Suite 210
PO Box 186
Carmi, IL 62821
Phone: 618-382-5024
Fax 618-382-7038
Office email: boffice@so14lwib.com
Website www.so14lwib.com

Office Hours:
Monday-Thursday 8am-5pm