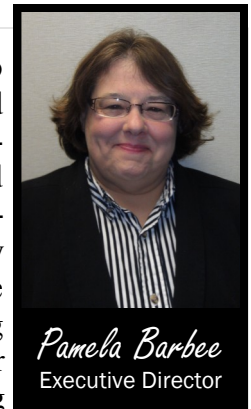


EXECUTIVE DIRECTOR COMMENTS

We submitted two DCEO talent pipeline grant applications. These grants are designed to focus on specific industry sectors, providing training and paid work experience to dislocated workers. We worked closely with Southeastern Illinois College to complete our first application which focuses on the oil and gas industry in our area's northern counties. If approved this grant would provide \$132,840 of direct training and \$79,613 of non-direct, which includes some case management funding, a portion of a business outreach position (hired by SIC) as well as some administrative funding. It is our plan to provide classroom and on the job training for 12 dislocated individuals. Our other application was developed by working closely with Shawnee Community College and will focus on surveying/engineering in our area's southern counties. If approved this grant would provide \$143,388 of direct training and \$57,563 of non-direct, which includes some case management funding, a portion of a program specialist position (hired by SCC) as well as some administrative funding. It is our plan to provide classroom and on the job training for 8 dislocated individuals, as well as upgrading the skills of 8 incumbent workers to avoid a possible layoff.



As I reported last month Patriot Coal has filed a WARN notice and will be laying off employees in three of their Union County Kentucky mines. The initial impact to our residents was less than we expected. We reached out to the 31 individuals and had eight attend our rapid response meeting. IDES staff assisted each of the individuals with Joblink, SIC staff gave them training information and Mid 5 was on hand to make appointments for those interested in training. Unfortunately due to the weather Kentucky Unemployment was not able to attend our event. As an area we still have adequate dislocated worker funding so I do not anticipate requesting any additional funding for this event.

INSIDE THIS ISSUE:

Executive Director Comments	1-2
Board Information	2
CEO Information	3
Illinois workNet	3
Service Provider / Center Info	4
IDES Report	5

The NEG grant has less than six months remaining (ends June 30, 2015). At the end of January we have served 35 individuals, 20 were long term unemployed and 6 were veterans. Most of the individuals were enrolled in classroom training and 12 participated in paid work-based learning. This grant has proven to be a great success - at the end of January 14 individuals have completed the program with 11 of those individuals entering unsubsidized employment. We are on track to expend all of the allotted funding and anticipate an even greater number of individuals gaining employment.

Continued on page 2

EXECUTIVE DIRECTOR COMMENTS...CONTINUED

The Willow Lake (1E) grant also ends June 30, 2015. We have served 31 participants with these funds. All of the participants received classroom training and most received needs related payments when they had exhausted their unemployment benefits. At the end of January, 21 individuals have completed the program with 16 of those individuals entering unsubsidized employment.

The Tornado Disaster grant ends on June 30, 2015 as well. We provided the City of Brookport with seven individuals to assist with the disaster clean-up. Only one of the participants have exited the program and he was incarcerated so did not exit with employment. The four individuals enrolled in training will be moved to regular dislocated worker funding when the grant ends.

To date we have served 19 participants with our Trade funding. All participants enrolled in this funding were laid off from Airtex in Fairfield and have been or are currently attending classroom training. Only one individual has completed the program and he exited with employment.

With our two pending appointments, we are again in compliance with a business majority for our board, but still do have counties with empty seats. Kim has listed the counties that need members in the CEO information of the news letter. In this time of change it is important that each county have a voice so please do help us recruit new members.

Reliable information is slow concerning the new WIOA act or how it will change our board composition. I was told that the draft regulations would be available mid to late February, but still no regs, and that the "new" board must be in place by July 1, 2015. I have heard examples of what other LWIAs are doing, but nothing concrete or official.

Thank you for your continued support! Please let me know if I can offer any additional information or clarification.

BOARD MEMBER INFORMATION

BOARD MEETING ITEMS:

- December 2014 Minutes
- Financial Reports for December 2014, January 2015 and February 2015
- Admin funds transfer from misc to GR Travel
- Employee Incentive
- Policy on Employee Insurance Reimbursement
- Part-time Office Assistant reclassifying to full time Fiscal Officer



WWW.SO14LWIB.COM

CEO INFORMATION

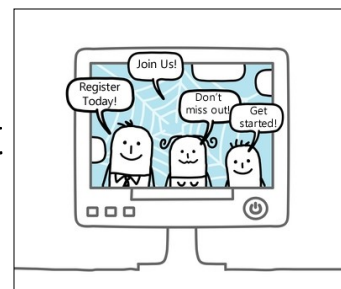
BOARD MEMBERS NEEDED

Alexander—2	Edwards—2	Gallatin—2
Hamilton—1 pending	Massac—1	Pulaski —1
Saline—2	Union— 2	Wayne—1 (pending)

ILLINOIS WORKNET

AND THE WEBINARS CONTINUE...

Illinois workNet wants to make sure our users know about all of the tools and resources to help you successfully use our site. We are continuing on in our webinar series and have scheduled six more sessions!



Networking and Connecting Tools Webinar—March 12, 2015 10:00 AM

This webinar will review locating Illinois workNet Centers and Partners near you, using the Event Calendar, finding student and trade associations, and using social media. All of these items are needed to use networking as a job search tool.

Employment 101 Webinar—March 18, 2015 10:30 AM

This webinar will walk users through the Employment 101 tool and how to use it to plan out your path to achieving your goals. With Employment 101 you can create and use a Career Plan, Job Search Plan, and plan to Achieve Your Goals.

Find Work Support Tools and Services Webinar—March 25, 2015 10:30 AM

This webinar will cover the Updates & Help menu of Illinois workNet that includes news and updates, FAQ, glossary, download and print, success stories, and related articles, videos, and resources!

Employers Programs and Tools Webinar—April 1, 2015 10:00 AM

This webinar will review tools available to employers on Illinois workNet for hiring and recruiting employees. We will also look at programs that can help employers off-set hiring and training costs.

Layoff Assistance Resources and Tools Webinar—April 7, 2015 10:00 AM

This webinar will review the resources and tools available on Illinois workNet for employers and workers that have been or will be affected by a layoff.

jobPrep Mobile App Webinar—April 15, 2015 10:00 AM

This webinar will walk users through the jobPrep app. Learn how you can use the mobile version of the Illinois workNet website anywhere and anytime you need it. You can download the app from Google Play, Apple App Store, and Amazon.

SERVICE PROVIDER INFORMATION

MID-5 EMPLOYMENT & TRAINING, INC.

Roger Boma, Director
PO Box 505, 701 North Commercial , Suite 6A
Harrisburg, IL 62946
Phone: 618-252-6020 Fax: 618-252-0326 Email: midfive@frontier.com

SHAWNEE DEVELOPMENT COUNCIL, INC.

Denna Williams, Executive Director
PO Box 298, 530 West Washington
Karnak, IL 62956
Phone: 618-634-2201 Fax: 618-634-9551 Email: sdcinc@shawneedevelopment.org

WABASH AREA DEVELOPMENT, INC.

Ken Pettijohn, Executive Director
PO Box 70, 110 Latham Street
Enfield, IL 62835
Phone: 618-963-6187 Fax: 618-963-2377 Email: ceo@wadi-inc.com

ILLINOIS WORKNET CENTER

701 North Commercial, Suite 6A
Harrisburg, IL 62946
Phone: 618-252-6020

ILLINOIS WORKNET CENTER—SATELLITES

2207 Poplar, Cairo, IL 62914 618-734-9034
1 Superman Square, Metropolis, IL 62960 618-524-2941
8364 Shawnee College Road, Ullin, IL 62992 618-634-3293
1000 North Main, Anna, IL 62906 618-833-7431
R.R. 4 334 Industrial Drive, Albion, IL 62806 618-445-2379
2004 W. Delaware Street, Fairfield, IL 62837 618-842-2962
823 W. 9th Street, Mt. Carmel, IL 62863 618-262-8133
1 Market Street, Elizabethtown, IL 62931 618-287-8880
100 South Jackson, McLeansboro, IL 62859 618-643-3975

IDES REPORT

Not Seasonally Adjusted Unemployment Rates (percent) for Local Counties and Areas

	Dec. 14	Dec. 13
Carbondale Area		
Alexander County	8.5%	10.9%
Jackson County	5.6%	7.7%
Massac County	6.3%	8.6%
Perry County	7.4%	11.7%
Pulaski County	7.7%	10.6%
Randolph County	5.6%	8.6%
Union County	7.7%	11.5%
Marion Area		
Franklin County	8.4%	12.9%
Johnson County	7.4%	10.9%
Williamson County	6.1%	8.8%
Harrisburg Area		
Gallatin County	6.5%	9.4%
Hamilton County	6.4%	7.9%
Hardin County	7.6%	12.0%
Pope County	7.3%	10.5%
Saline County	6.8%	10.4%
White County	5.3%	8.2%
Olney - Mt. Carmel Area		
Edwards County	6.6%	9.3%
Lawrence County	5.9%	9.0%
Richland County	6.5%	9.2%
Wabash County	5.4%	8.2%
Wayne County	6.5%	8.6%

Southern Illinois Highlights

Unemployment decreased in all 21 counties in Southern Illinois when compared to one year ago. The data is not seasonally adjusted.

Labor market conditions continued to improve at the end of 2014 in Southern Illinois. Retailers and Restaurants hired temporary and part time workers for the holiday season. Construction activity on highways and commercial buildings remained busy. Employment gains were reported in Wholesale Trade, Transportation, and Health Services.

Numerous employment opportunities were available in Sales, Health Care, and Transportation at the end of 2014. Job openings were advertised in Food Service, Office and Administrative Support, and Management occupations. Career prospects were also available in Education and Training, Social Services, Computer Occupations, Business and Finance, and Installation, Maintenance and Repair occupations.

The unemployment rate identifies those who are out of work and seeking employment. A person who exhausts benefits, or is ineligible, still will be reflected in the unemployment rate if they actively seek work.

The IDES supports economic stability by administering unemployment benefits, collecting business contributions to fund those benefits, connecting employers with qualified job seekers, and providing economic information to assist career planning and economic development.

Note:

Monthly 2013 unemployment rates and total nonfarm jobs for Illinois metro areas were revised in February 2014, as required by the U.S. Dept. of Labor, Bureau of Labor Statistics (BLS). Comments and tables distributed for prior metro area news releases should be discarded as any records or historical analysis previously cited may no longer be valid.

LWIA # 26

304 East Robinson Street, Suite 210
P.O. Box 186
Carmi, IL 62821

Phone:618-382-5024

Fax:618-382-7038

E-mail: boffice@so14lwib.com



Board Staff

Pam Barbee, Executive Director

pbarbee@so14lwib.com

Kim Jacobs

Program & Board Compliance Manager /

EO Officer

kjacobs@so14lwib.com

Office Hours:

Monday-Thursday 8am-5pm



- Southern 14 Workforce Investment Board, Inc. is one of Illinois' 26 regional boards designated by the governor to receive federal funding established by the Workforce Investment Act of 1998 (WIA).
- The Board is mandated to provide oversight and monitoring of the programs operated with those funds.
- The governing board consists of members from our 14 counties representing business (private sector) and public sector entities which include labor, education, economic development and others who have a keen interest in improving workforce development efforts in the region.
- Board members representing state agencies are nominated by the directors of those agencies.
- Members representing other public agencies are nominated in public meetings attended by like organizations.
- Business members must be nominated by general purpose business organizations. Nominations are submitted to the County Boards for appointment with final approval of the state.
- Funds received are sub-contracted to three board approved service provider organizations who provide direct client services in the area of support and training. Support services, which include transportation and daycare, are provided for eligible clients.
- The Board also administers special grants to assist local workers affected by mass layoffs due to plant closures or relocation of facilities.