

Top stories in this newsletter



Southern Illinois
Unemployment
Highlights



Autumn Gines:
Success Story



Maude Harrison:
Success Story



Office of Minority Economic Empowerment:
Business Basics Video Series



Southern Illinois Highlights

Carbondale – Marion Area

The May 2022 unemployment rate was 5.0 percent. This was a decrease of -0.2 percentage points from the May 2021 rate of 5.2 percent. Total nonfarm employment in May 2022 increased by +1,600 compared to last May.

Employment increased in Government (+200).

Surrounding Counties

Total nonfarm employment increased by +650 compared to May 2021.

Employment gains were posted in Government (+275), Leisure and Hospitality (+250), Educational and Health Services (+200), Trade, Transportation, and Utilities (+50), Other Services (+50), Manufacturing (+50), Information (+25), and Construction (+25). No change was reported in Financial Activities.

May payrolls declined in Professional and Business Services (-150), and Natural Resources and Mining (-50).

Harrisburg Area

Total nonfarm employment increased by +300 compared to May 2021.

Employment gains were posted in Government (+175), Trade, Transportation, and Utilities (+100), Information (+75), Financial Activities (+50) and Natural Resources and Mining (+25). Leisure and Hospitality, Educational and Health Services, Other Services, Manufacturing, and Professional and Business Services payrolls were unchanged.

Employment declined in Construction (-75).

Olney – Mt. Carmel Area

Total nonfarm employment increased by +525 compared to May 2021.

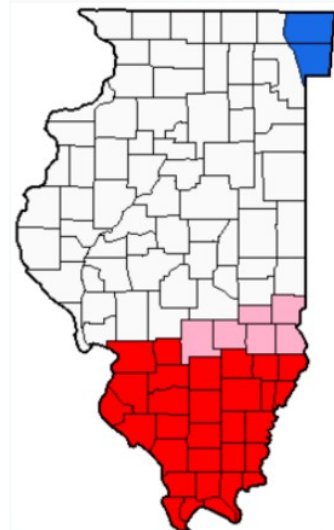
Employment gains were posted in Government (+225), Trade, Transportation, and Utilities (+150), Leisure and Hospitality (+75), Educational and Health Services (+75), Other Services (+50), Natural Resources and Mining (+25), and Professional and Business Services (+25).

No changes were reported in Information, or Financial Activities.

Employment declined in Manufacturing (-125) and Construction (-25).



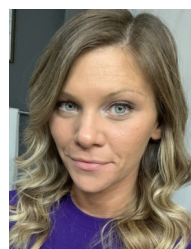
Marion, Illinois



Labor Market Area	May 2022	May 2021	Over the Year Change
Carbondale-Marion MSA	5.0 %	5.2 %	-0.2
Jackson County	5.0 %	5.2 %	-0.2
Williamson County	5.0 %	5.2 %	-0.2
Surrounding Counties			
Alexander County	8.1 %	7.2 %	0.9
Franklin County	6.3 %	6.2 %	0.1
Johnson County	6.0 %	5.3 %	0.7
Massac County	5.6 %	5.2 %	0.4
Perry County	5.6 %	5.1 %	0.5
Pulaski County	8.5 %	8.6 %	-0.1
Randolph County	3.9 %	3.8 %	0.1
Union County	5.4 %	4.8 %	0.6
Harrisburg Area			
Gallatin County	5.9 %	5.8 %	0.1
Hamilton County	3.8 %	4.1 %	-0.3
Hardin County	6.4 %	6.3 %	0.1
Pope County	4.8 %	4.7 %	0.1
Saline County	6.2 %	6.1 %	0.1
White County	4.6 %	4.6 %	0.0
Olney - Mt. Carmel Area			
Edwards County	4.9 %	4.8 %	0.1
Lawrence County	5.9 %	5.7 %	0.2
Richland County	4.2 %	4.0 %	0.2
Wabash County	4.1 %	4.2 %	-0.1
Wayne County	4.2 %	4.3 %	-0.1
Other Areas			
LWIA 23	4.4 %	4.3 %	0.1
LWIA 24	4.7 %	4.9 %	-0.2
LWIA 25	5.4 %	5.5 %	-0.1
LWIA 26	5.3 %	5.1 %	0.2
Southern EDR	5.3 %	5.4 %	-0.1

Autumn Gines: Success Story

Autumn Gines came to the Edwards County office inquiring about Work Experience assistance. We were able to assist her through the collaboration of CSBG and WIOA Work Experience Programs by providing her with work experience at Wabash Area Development, Inc., in Albion.



Autumn was working towards her Social Service degree and Community Action would provide excellent knowledge and work experience to accomplish that goal. While working in the Work Experience program at WADI she completed her Social Service degree at Wabash Valley College and graduated May 13, 2022. She enjoyed her Work Experience job and learned different aspects of a Social Service agency.

On Monday, July 11, 2022, Autumn started her new employment as a Home Visitor with Head Start at the Wayne County, Wabash Area Development, Inc. office. WADI promotes employment opportunities through WIOA Work Experience and is very proud of Autumn's accomplishments. Autumn will make a great addition to the staff with her hard work and dedication. Congratulations.

Nelda Booker, Career Planner

Maude Harrison: Success Story

WADI would like to recognize Maude Harrison as one of our WIOA success stories. Maude started the WIOA Youth Program in August 2013, she needed assistance with Occupational Training. WIOA helped Maude get her Early Childhood Degree, at Rend Lake College. Maude's grades were excellent she was on the President List with honors and Phi Theta Kappa. The expense of a college education was beyond what her family could afford. She said, "She would not have been able to attend college if it wasn't for WIOA."



Maude is the first one in her family to graduate with a college degree. This was a huge accomplishment for her. Maude's parents are hard workers and they instilled honesty, strong work values, and the desire to succeed.

After getting her degree, Maude was hired at WADI as a White County, Head Start/ Early Head Start Home Visitor. I had the privilege to Supervise Maude, she was a dependable and compassionate employee. Percentage of HS visits were above standards, and she was resourceful for our WADI families. Maude's involvement with Community events excelled and family's needs were met following through with great outcomes.

Maude is now our LIHEAP Director! Her dedication to Community Action and hard work paid off. Maude credits the strong family support that helped her with her educational goals and the opportunity WIOA provided. The Career Planner played an important role as they built a working relationship and guided her through the program. Maude states, "Never be scared to reach out for help, that is what Community Action is here for."

Kathy Dinwiddie, CSBG/WIOA Specialist

**Illinois
Department of Commerce
& Economic Opportunity**



Office of Minority Economic Empowerment (OMEE)

Business Basics Video Series

OMEE and IL Small Business Development Center Network have partnered to develop the "Business Basics" series. The goal is to share easy-to-follow information on basic business concepts that business owners need to know in order to be successful. Each video is just 30 minute long. More videos will be added in the future.

Filing Taxes, Including Sales Tax (Jo Ann May – IL SBDC Metro East at SIUE) – If you don't file taxes as a business, you could be ineligible for important resources and support. This workshop will discuss the basics of keeping up-to-date records for your business, and how to go about filing your taxes as a business.

What Is A Business Plan, and Why Do I Need One? (Karim Dure – IL SBDC at YWCA Metro Chicago) – A business plan is a road map for business success. It is a great tool to helping you understand your own business. This workshop will discuss the basics of creating a strong plan for your business.

5 Keys to Formalizing Your Business (Cheryl Hudson-Jackson - IL SBDC at YWCA Metro Chicago) – Having a legal entity established will impact your ability to access funding and other important resource. This workshop will cover the basics of establishing your business as a legal entity. Including IL Secretary of state, SAM, Duns and ITIN.

Marketing Basics: Getting Customers and Keeping Them (Melissa Duff Brown – IL SBDC at The Joseph School) – Attracting clients and telling your story is a very important part of business success. This workshop will cover the basics of connecting with customers and how to drive sales to your business.

ANY RECENT CHANGES?

- HAVE YOU MOVED?
- CHANGED PHONE NUMBER?
- NEW EMAIL ADDRESS?

Please notify the board office at boffice@so14lwib.com with the new changes.

BOARD OFFICE INFO

- OPEN M-TR: 8-5
- PO Box 186 CARM, IL 62821
- PHONE: 618-382-5024

So. 14 Office Notes: Up coming Board Meeting date:

SEPTEMBER 13, 2022

Every year a select number of board members need their Board appointment/reappointment forms re-certified by the State. All board member will have their reappointment forms mailed to them by mid- August, please review for accuracy, note any corrections, sign, and return to the board office no later than September 13th, 2022. Thank you!