

Top stories in this newsletter



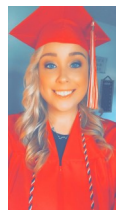
Southern Illinois Unemployment Highlights



LWIA #26 News



Service Provider Updates



Riki Slayton: Success Story

Southern Illinois Highlights



Carbondale – Marion Area

The August 2022 unemployment rate was 4.5 percent. This was a decrease of -1.3 percentage points from the August 2021 rate of 5.8 percent. Total nonfarm employment in August 2022 increased by +2,100 compared to last August.

Employment increased in Government (+200).

Surrounding Counties

Total nonfarm employment increased by +750 compared to August 2021.

Employment gains were posted in Leisure and Hospitality (+275), Government (+275), Educational and Health Services (+200), Other Services (+50), Construction (+50), Information (+25), Financial Activities (+25), and Manufacturing (+25).

August payrolls declined in Professional and Business Services (-100), and Natural Resources and Mining (-50). No change was reported in Trade, Transportation, and Utilities.

Harrisburg Area

Total nonfarm employment increased by +200 compared to August 2021.

Employment gains were posted in Government (+125), Trade, Transportation, and Utilities (+75), Educational and Health Services (+50), Information (+50), Financial Activities (+25), Natural Resources and Mining (+25) and Other Services (+25).

Manufacturing payrolls were unchanged. Employer declined in Construction (-100), Professional and Business Services (-25), and Leisure and Hospitality (-25).

Olney – Mt. Carmel Area

Total nonfarm employment increased by +250 compared to August 2021.

Employment gains were posted in Government (+125), Leisure and Hospitality (+75), Trade, Transportation, and Utilities (+50), Educational and Health Services (+50), Other Services (+50), Natural Resources and Mining (+25), and Financial Activities (+25).

No changes were reported in Information or Professional and Business Services.

Payrolls decreased in Manufacturing (-75) and Construction (-25).



Not Seasonally Adjusted Unemployment Rates (percent) for Local Counties and Areas

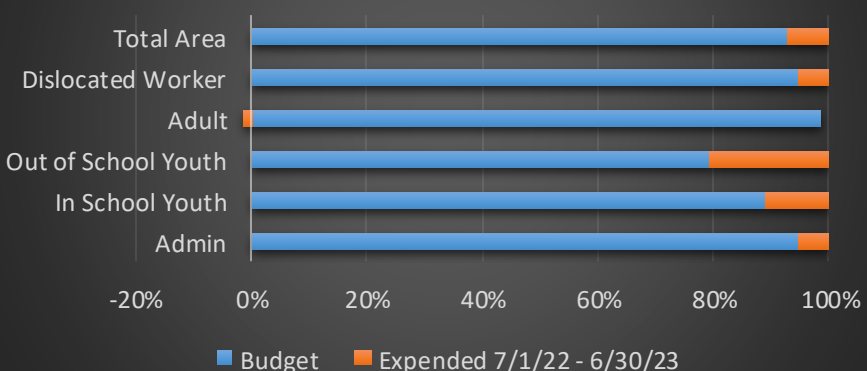
Labor Market Area	Aug 2022	Aug 2021	Over the Year Change
Carbondale-Marion MSA	4.5 %	5.8 %	-1.3
Jackson County	4.6 %	5.7 %	-1.1
Williamson County	4.5 %	5.8 %	-1.3
Surrounding Counties			
Alexander County	8.1 %	8.4 %	-0.3
Franklin County	5.9 %	7.0 %	-1.1
Johnson County	5.8 %	5.9 %	-0.1
Massac County	5.3 %	5.9 %	-0.6
Perry County	5.1 %	5.8 %	-0.7
Pulaski County	8.4 %	9.4 %	-1.0
Randolph County	3.6 %	4.7 %	-1.1
Union County	4.9 %	5.9 %	-1.0
Harrisburg Area			
Gallatin County	6.0 %	6.5 %	-0.5
Hamilton County	3.7 %	4.6 %	-0.9
Hardin County	6.5 %	6.9 %	-0.4
Pope County	5.5 %	5.4 %	0.1
Saline County	6.0 %	7.0 %	-1.0
White County	4.4 %	5.0 %	-0.6
Olney - Mt. Carmel Area			
Edwards County	4.5 %	5.4 %	-0.9
Lawrence County	5.5 %	6.0 %	-0.5
Richland County	4.1 %	4.4 %	-0.3
Wabash County	3.7 %	4.5 %	-0.8
Wayne County	4.1 %	5.1 %	-1.0
Other Areas			
LWIA 23	4.2 %	4.9 %	-0.7
LWIA 24	4.4 %	5.5 %	-1.1
LWIA 25	5.0 %	6.1 %	-1.1
LWIA 26	5.1 %	5.8 %	-0.7
Southern EDR	5.0 %	6.0 %	-1.0



LWIA #26 News

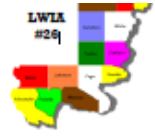


Area Budget with Expenditures to Date





LWIA #26 News



Grant Information

Grants	21-681026					22-681026			
	Revised Budget	Expended as of 6/30/21	Carry Forward Budget	Expended 7/1/22 - 6/30/23	Remaining Budget	Original Budget	Revised Budget	Expended 7/1/22 - 6/30/23	Remaining Budget
Board Office									
Total Board Office	157,789.00	73,342.80	84,446.20	12,187.04	72,259.16	136,599.00	136,599.00	0.00	136,599.00
OneStop Staff									
Total OneStop Staff	58,279.00	46,623.20	11,655.80	2,799.59	8,856.21	32,909.00	32,909.00	0.00	32,909.00
WADI									
Total WADI	601,282.00	447,836.59	153,445.41	67,731.47	85,713.94	635,977.00	635,977.00	0.00	635,977.00
SDC									
Total SDC	760,559.00	428,829.43	331,729.57	64,003.57	267,726.00	560,511.00	560,511.00	0.00	560,511.00
AREA									
Total Area	1,577,909.00	996,632.02	581,276.98	146,721.67	434,555.31	1,365,996.00	1,365,996.00	0.00	1,365,996.00

Participant Information

Participant Overview	
Active Participants	141
Exiters	552
Total Participants	693
Exit Information	
Exiters	552
Employed at Exit	297
Employed 2nd Quarter after Exit	175
Employed 4th Quarter after Exit	154
Employed in Training Related Job at Exit	189
Employed in Training Related Job 2nd Quarter after Exit	113
Employed in Training Related Job 4th Quarter after Exit	102

WADI

Southern 14 Monthly Update-September 2022

WADI is holding a Hiring Event from 10AM-7PM, October 11th-13th, at three different locations. The event will be an opportunity for the community to walk in and ask questions about job openings to decide which job may be the best fit for them. After an application is filled out, appropriate staff will be present and ready for on-the-spot interviews. A WIOA representative will be onsite to promote WIOA services at the Hiring Event.

Saline Gallatin Career Planner

June

Walked in the Coal Day Parade with Head Start and handed out flyers promoting WIOA and Head Start. Went to all the High schools in Gallatin and Saline (Harrisburg, Eldorado, Gallatin county, Carrier Mills, and Galatia), to speak to students and teachers about what the program offers. Information about Senior day at SIC was shared and parents were invited.

July

Participated in Senior day at SIC, all the seniors and parents were invited to attend and collect WIOA information. Over 50 Youth came to the event and WADI ended up enrolling 4 of them in the WIOA program and made several refer to other services.

September

Pam Barbee and I visited the Egyptian Health Department and spoke with the staff that assists Adults and Youth in tasks to help improve their stability and mental health. For example: housing, counseling, job skills, education, and WIOA services were discussed in great detail. Egyptian Health Dept is working with Enfield Central Office to set up a new referral with WADI.

White/Hamilton Career Planner

Collaborate with SIC to provide services for the IT Grant and regular WIOA funding. Career Planner provides flyers and one on one contact with students at SIC. Attended a conference in Grayville networking with the Housing Coalition and shared WIOA specific information.

Career Planner volunteered in two parades, Harrisburg Homecoming and Dairy Days in Norris City. The parades provided an opportunity to hand out flyers and WADI brochures. Career Planner met with some of the high school students in Norris City and provided program information. Participated in the shoe drive at Booth Grade School, brochures and service information was provided. In October, WADI will participate with another shoe drive at CWCHS. This will be a great opportunity for the Career Planner to talk with high school students about WIOA services.

Edwards/ Wabash

Collaborated Work Experience services with Champion Laboratories in Albion. Two participants were hired full time as a result of the Work Experience program. Outreach efforts made with the WVC to provide services to eligible participants in the community.

Wayne

Career Planner participated in the Fall festival in Wayne County providing flyers and brochures at the parade. Outreach efforts are continuously provided to Frontier Community College, Olney Central College, and Rend Lake Community College. A meeting with high school seniors will be held in early Spring to promote services prior to graduation.

SHAWNEE DEVELOPMENT COUNCIL, INC.**Southern 14 Monthly Update- September 2022**

***Shawnee Development Council WIOA program** has enrolled 27 new participants for the Fall 2022 semester. We have 23 returning participants for the Fall. Most of the participants are in the nursing/health field or truck driving. We have others in business management, criminal justice, etc. as well.

***Meetings/ trainings attended recently:**

-So14 LWIB provided a Service Provider Training on September 22nd.

***Work Experience:** We have three youth participants on Work Experience. Worksites are located in Pope & Alexander. We had 3 workers end their time a couple of weeks ago, and we have one that started on September 27th in Cairo. We will put on a few others asap.

***Rapid Response:** None this month.

****Most recent update of the EEI situation:** the plant has shut down, but employees will still be paid until September 30th. After that date, they can apply for UI benefits.

***Upcoming Events:**

- September 30th College Day at Vienna High School
- Career Expo at Shawnee College hosted by Vienna High School
- Oct 11th & 17th, Shawnee College will start the next CDL classes in Metropolis & the Main Campus

Respectively Submitted,
Victor Duckworth
Shawnee Development Council, Inc.

Success Story



Rikki Slayton came into the WADI office on June 1, 2020, for Workforce Innovation & Opportunity Act services. She was a single mom with two infant age children and wanted to be able to provide a stable future for her family. Rikki was not employed at that time and was seeking assistance paying for her nursing classes.

Rikki was accepted into the RN Nursing Program at Wabash Valley College starting that Fall Semester in August 2020. The Workforce Innovation & Opportunity Act Program was able to assist her with Tuition, Books, Fees, Uniforms, and Mileage-along with the RN Licensing exam. She maintained mostly A's and B's during the two year training program. She enjoyed her classes and clinicals—even though they were difficult. All classes went remote after Thanksgiving for the rest of the semester. The program was hard at times due to the added pressure of Covid-19 and remote classes.

Rikki passed the program with flying colors and the RN Licensing exam. She accepted a job recently on 8/3/2022 at Oakview Nursing and Rehabilitation in Mt. Carmel, IL as an RN. Rikki will continue to pursue her career goals of being a Nurse and helping others. WADI is proud of her achievements and congratulate her success!

Nelda Booker

Edwards / Wabash Career Planner

So. 14 Office Notes:

Up coming Board Meeting date:

When: December 13, 2022

Time: 7:00 pm

Where: SIC Building G

ANY RECENT CHANGES?

- HAVE YOU MOVED?
- CHANGED PHONE NUMBER?
- NEW EMAIL ADDRESS?

Please notify the board office at boffice@so14lwib.com with the new changes.

BOARD OFFICE INFO

- OPEN M-TR: 8-5
- PO Box 186 CARM, IL 62821
- PHONE: 618-382-5024